

**zadako**  
wireless solutions



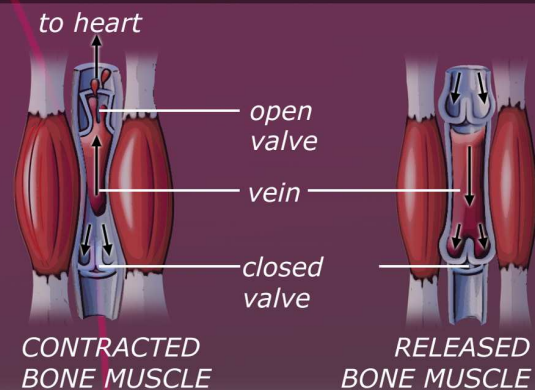
# TRAVEL VARIX SYSTEM

ORIGINAL PREVENTION  
OF SO-CALLED „HEAVY LEGS“



**1. step:** The TVS must be charged before use. The maximum charging time is 6 hours. The maximum usage time of TVS is 6 hours.

**2. step:** TVS must be clipped around the leg upon ankle by adequate force and put together by Velcro fastener. The system is switched on by short pressing of the button (1, 2 or 3 choice of massage level) and switched off by pressing the button OFF.



## What kind of compression?

	Evening edema Varicosity Telangiectasia	Varices without complications	Varices with complications	After sclerotherapy	After surgery	Ulcers of knee area (after edema resorption)	Skin changes	Venous insufficiency in pregnancy	Prevention of deep venous thrombosis	Deep venous thrombosis	Posttrombotic syndrome	Lymphedema
10 - 15 mmHg	▲▲	▲▲						▲▲	▲▲			
15 - 20 mmHg		▲▲	▲	▲▲	▲▲			▲▲	▲▲			
20 - 36 mmHg			▲▲	▲	▲▲	▲▲	▲	▲		▲▲	▲▲	
> 36 mmHg							▲				▲	▲▲